

# Virtual Informational Session

**RFP:24 Artwork/Opportunities  
Acquisition and Commissioning**

**RFQual: Showpiece/Mural  
Staircase Installation**



# Welcome



# Meet the team

## Cross-Functional Team

- **MCPHD Laboratory:** Margee Muciarelli
- **Holliday Collab:** Lamar Holliday
- **60 On Center:** Mike Barclay
- **Construction Project Team:** Pink Bissett, Stephanie McAdams, Eric Kaufman
- **Public Relations/External Affairs:** Collette DuValle
- **Design and Architecture - Gidon:** Lindsay Splichal
- **Purchasing:** Adelaide Mhlanga
- **Supplier Engagement:** Felecia Roseburgh
- **Legal:** Anne O'Connor, Donnie Thomas



# RFP Overview

## MCPHD LABs

The Public Health Laboratory provides **clinical, environmental microbiology, and chemistry** laboratory services to all Marion County Public Health Department programs and other local health agencies





# RFP Overview

## About New MCPHD LAB

### Key Features

#### New Public Health Laboratory Facility

- **Location:** 3810 Meadows Drive, Indianapolis, IN 46205 (*across from the MCPHD Building*)
- **Size:** 2-story, approx. 65,318 sq ft
- **Accessibility:** Near IndyGo Purple Line stop

#### First Floor Additions:

- Bellflower Clinic
- Department of Vital Records
- Immunization Records

#### Community Impact:

- Catalyst for **urban redevelopment**
- Enhances **public access** and health services



Open, flexible **Clinical & Environmental Laboratories**



Dedicated **BSL-3 Laboratory**



**Training Labs & Laboratory Support Areas**



**Warehouse Dock** for logistics



**Event Space** for community gatherings



**Office & Administrative Spaces**

# Calls Overview

## Artwork Opportunities Overview

- Two distinct opportunities:
  - RFQual: Large-Scale Staircase Mural
  - RFP: 24 Original 2D Artwork Acquisitions.

## Submission and Eligibility

- Detailed eligibility criteria and submission requirements guide interested artists in applying successfully.

## Session Goals

- Ensure clear understanding of project scope and encourage diverse, community-centered artistic contributions.



# Appendix

## MCPHL Mural Location & Inspirational Concepts



### Floor Plans and Elevation

**Drawing:** Provided for clarity of artwork locations. The selection committee will decide artwork locations.



### Inspiration Board:

Imagery, colors and artwork styles presented for inspiration.

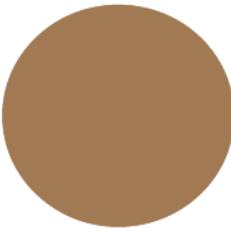


### Color Finishes:

Demonstrates the building's color scheme, patterns and materials.



(P-10) SW6460



(P-11) SW6117



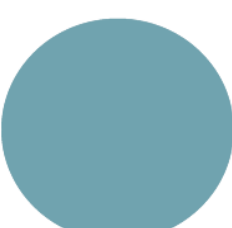
(P-8) SW6194



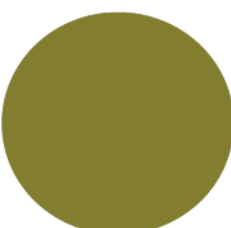
(P-9) SW9185



(P-5) SW9041



(P-4) SW6494



(P-6) SW6713

# RFQual: STAIRCASE MURAL INSTALLATION





# PROJECT SCOPE AND THEMES

## Mural Installation Space

- The mural space includes a 25'2" floor to-ceiling height wall by 22'3¼" width, with potential extension around a corner.

## Creative Design Themes

- Themes include Ambient, Decorative, Community, and Informative to inspire peaceful, aesthetic, and educational murals.

## Artist Responsibilities

- Artist is responsible for design development, coordination with facilities, material procurement, installation, and maintenance guidance.

## Safety and Compliance

- All materials must meet Indiana Fire Code regulations to ensure public safety in the mural installation.





# ELIGIBILITY AND SUBMISSION REQUIREMENTS

## Eligibility Criteria

- Applicants must be 18 or older; preference is given to artists from Marion County, Indiana. All art students, emerging, established artists, and teams are eligible.

## Submission Materials

- Required materials include a visual resume, CV, portfolio of up to 10 works, respondent's statement, letter of interest, and references.

## Submission Guidelines

- Submissions must be original and electronic via SAP Ariba by January 6, 2026, 3:00 p.m. ET. Late or previously exhibited works are not accepted.

## Content and Safety Compliance

- Art must be suitable for clinical/public settings and comply with safety and fire regulations to be accepted.

# TIMELINE AND EVALUATION CRITERIA

## RFQual Process Timeline

- The RFQual timeline includes release, Q&A, submission, review, interviews, notifications, and installation phases between October 2025 and summer 2026.

## Submission Evaluation Criteria

- Submissions are evaluated on artistic quality, originality, community connection, material durability, feasibility, and maintenance considerations.

## Final Selection and Contract

- A review committee selects finalists to develop proposals; the chosen artist signs a contract covering rights and responsibilities.



# RFP: 2D ARTWORK ACQUISITION





# PROJECT SCOPE AND ARTIST DELIVERABLES

## Artwork Submission Requirements

- Artists can submit up to five original unframed 2D artworks, each max 5'x5', suitable for clinical and public spaces.

## Accepted Media and Materials

- Accepted media include painting, photography, and mixed media, focusing on durable and easy-to-maintain materials.

## Submission Details

- Submissions require high-quality images, artwork details, pricing, and intellectual property information.

## Project Goals and Compliance

- Project promotes community identity, wellness, diversity, and complies with fire code and framing regulations.



# ELIGIBILITY, SUBMISSION STRUCTURE, AND EVALUATION

## Artist Eligibility Criteria

- Artists must be 18 or older, preferably from Marion County, with public art or community work experience encouraged.

## Structured Submission Requirements

- Proposals need an executive summary, artist profile, portfolio, and detailed artwork descriptions following a clear format.

## Evaluation Criteria Overview

- Submissions are evaluated on artistic quality, relevance, durability, cultural significance, and budget feasibility.

## RFP Process Goals

- The RFP aims to select artists whose work aligns with thematic and material guidelines and supports MCPHD's mission.





# TIMELINE AND SUBMISSION PROCESS

## **RFP Timeline Overview**

- The RFP timeline spans from October 3, 2025, to late summer 2026, detailing key dates and milestones.

## **Submission Requirements**

- All proposals must be submitted electronically via SAP Ariba System by December 11, 2025, 3:00 p.m. ET; late submissions are not accepted.

## **Review and Notification**

- Selection committee review occurs on January 6, 2026, followed by artist notifications by February 18, 2026.

## **Installation Schedule and Support**

- Final artwork installation is planned for late summer 2026; artists can contact support for submission help.

# Doing Business HHC

- **Partner Registration**
  - Account Registration
  - PaymentWorks
- **Contract & Contract Term**
  - Purchase Order
- **Payment terms**
  - Subcontractor payments
- **Tax exemption**





The image is a collage of scientific and laboratory-related images. The top left shows a blue-tinted hexagonal molecular structure. The top right shows a person in a white lab coat and mask. The bottom left shows a close-up of a microscope's objective lens. The bottom right shows a person's hands in a lab coat. The text "Questions & Answers" is overlaid on the right side of the collage.

# Questions & Answers